

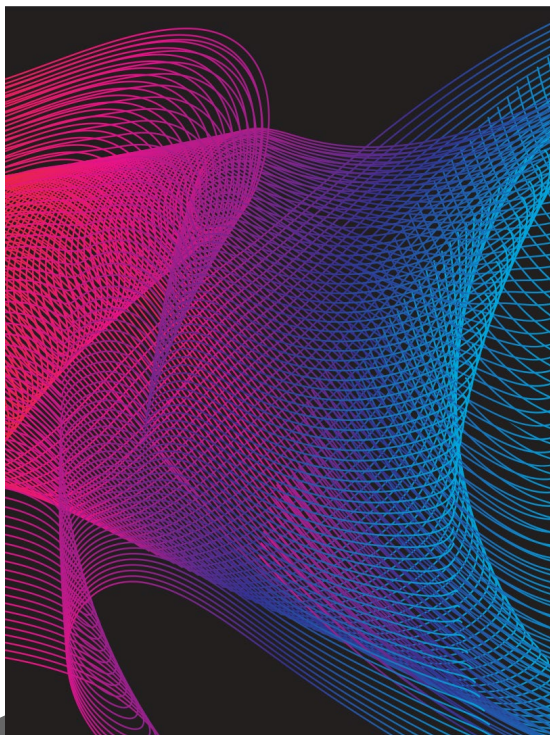
The Power of Toastmasters in a Virtual World

District 15 Conference
2021



Zoom Link Information:

<https://zoom.us/j/97380256901?pwd=dHg2cWFweE03ZzFmQ1dnQnM1UDBVUT09>



Welcome!

Welcome to the District 15 Annual Spring Toastmaster Conference!

Sameer and I miss having all of you here in Boise experiencing the City of Trees while catching up face-to-face. However, we are thrilled to take advantage of the available technology to bring you this year's conference. The Conference Committee is thrilled to bring you this exciting event!

We are delighted to have a variety of programming for you, such as keynote speakers, Morgan McArthur, 1994 World Champion of Public Speaking, and Naomi Takeuchi, DTM and International Director, who will bring quality content for those who want to increase their knowledge and skills as a leader and speaker!

The conference is also filled with many breakout sessions that will expand your knowledge in various ways to help your members and clubs grow. We will also be hosting the District Evaluations and International Speech Contests which will showcase some of the best speakers our District has to offer.

The District 15 Toastmasters conference theme is "The Power of Toastmasters in a Virtual World!" Our District Director, Annette Krause's vision is to build and bring new future leaders to District 15 Leadership no matter at what level our members choose to serve. You are the **FUTURE** of District 15! Enjoy the Conference and see the power of Toastmasters in a virtual world in action!

-Courtney and Sameer

Agenda

Pledge, Welcome, Introductions of note	8:00 AM
Morning Keynote (Morgan McArthur)	8:15 AM
Breakouts Sessions	9:30 AM
Evaluations Contest	10:30 AM
Lunch Break & Networking	11:30 AM
International Contest	12:05 PM
Speech Contest Winner Announcements	1:35 PM
Closing Keynote (Naomi Takeuchi)	2:20 PM
Wrap-up, Announcements (Annette Krause)	3:20 PM

Agenda Details

Breakout Room A

- Ethically Handling a Club Crisis (David Manning)

Breakout Room B

- Membership Retention and Acquisition (Sandra Savage)

Breakout Room C

- Appreciate the Right Way (Mira Johnson & Jimmy Bell)

Breakout Room D

- 3 Ways to Kill a Hybrid Meeting and 3 Ways to Cure it (Dave Morrison & Terry Yackley)

Breakout Room E

- Leading Your Club to 100% Enrollment in Pathways (Bonny Armstrong)

Breakout Room F

- Reconnecting Across the Years - Generational Collaboration in Toastmasters (Ken Jenkins)

Conference Toastmaster



Lumuli Wanyonyi

ACS and ALB, Member of Food For Thought, past club coach

Lumuli was born in a small remote village in the Western Province of Kenya. Kenya is a country of 42 million citizens and is geographically divided in half by the equator; one half on the northern hemisphere and the other on the southern hemisphere.

Lumuli is the last-born son of an entire family of fourteen. He was raised in a polygamous family that loved each other - most times of the year. Lumuli grew up on a farm where the family raised crops and animals to support the family and fund education. Lumuli walked a mile or so to his elementary school barefoot; eventually, he joined a secondary school where Lumuli could finally wear some "fancy" leather shoes.

After graduating from his village school and passing his national exams, Lumuli received an opportunity to join Kenyatta University which is located on the outskirts of Nairobi in the capital city of Kenya. This was his first time to see a major city - ever! After college Lumuli volunteered to work for a Christian organization for year and later a similar assignment in England. Talk of culture shock, this was something else! Lumuli met his wife of 15 years on a trip in Kenya. She had a boyfriend at the time but they remained friends for many years exchanging snail mail from time to time. She grew up, at first, with a single mom in a trailer community in Boise and later with several other half-families that her mom married into. They are raising their three amazing children; 12, 9 and 5 in Boise.

Lumuli had worked for almost a decade as an electrical engineer for locomotive manufacturing and power companies in Idaho and Delaware. A year ago, Lumuli resigned from his corporate job to run an engineering contracting company he founded in 2017.

Morning Keynote



Morgan McArthur

Veterinarian, Artist,
Connector/educator, World
Champion of Public Speaking
1994

Morgan's career path has been winding, unconventional, and rewarding. He practiced as a large animal veterinarian in Idaho, mending cattle and horses for 15 years.

He was a Research & Development Manager at a New Zealand pharmaceutical company for a decade. Morgan has given keynote/motivational speeches to audiences as small as three people and as large as three thousand. He is also a professional lettering/pinstriping artist. Morgan has enjoyed giving back to his hometown as a University of Wisconsin-Madison Extension educator/facilitator for the past five years.

Morgan is a co-leader in the Sauk County Institute of Leadership (SCIL) program, where the participants learn more about themselves, the county, and leadership skills. Morgan is also very involved with public art in his hometown of Baraboo, Wisconsin. At this stage of his career, Morgan knows it's important to give back to the community and he brings an enthusiasm and a sparkle to that mission. He also facilitates a weekly communication skills program with colleagues in New Zealand that has been very, very rewarding.

Morgan joined Toastmasters in Idaho Falls, Idaho in 1987. Little did he know then that that decision and that experience and the skills that came from that modest beginning would touch every aspect of his professional life for 30+ years.

We've invited him to speak with us at District 15 because he enjoyed success in the *Toastmasters World Championship of Public Speaking*. Morgan achieved runner-up in the contest in 1993 and returned to win the title in 1994. He did that with the support of Toastmasters throughout this district. Many years later, he's not forgotten that and is very pleased to return, even in a virtual format.

Closing Keynote



Naomi Takeuchi

DTM, Toastmasters
International Board of
Directors

Naomi Takeuchi, of Seattle, Washington, is an entrepreneur and multimedia strategist of her company, 1000 Cranes Studios, which she founded in September 2003.

She specializes in strategic planning and board development services, primarily for nonprofit and nongovernmental organizations. 1000 Cranes Studios, has established itself as a National brand leader and was chosen to showcase the development of its brand at five National Trademark Expos hosted by the US Patent and Trademark Office.

A Toastmaster since 2005, Takeuchi's home club is Seattle International 10 which she loves as this is a group focused on developing local Toastmasters leaders. She has held a number of high-profile leadership positions throughout her Toastmasters career and has attained the Distinguished Toastmaster designation twice.

"Not only does Toastmasters provide skills to gain confidence and poise in public speaking, the partnerships and friendships built through being part of this organization last for a lifetime," she said. As a member of the Toastmasters International Board of Directors, Takeuchi is an ambassador for the organization when she attends District events. She works with the Board to develop, support, and modify the policies and procedures that guide Toastmasters International in fulfilling its mission.

Breakout Session Speakers

David Manning



A Distinguished Toastmaster David, first joined Toastmasters in 1996 while serving in the United States Air Force in Incirlik, Turkey. Over the years, David has been a member of several clubs, served in all the club officer positions as well as served in various district leadership roles.

He has been a software engineer, IT architect, business owner, solar energy consultant and business telecommunications provider. During his years of military and business leadership experience, he has learned a thing or two about how to most effectively handle personnel crisis that can sometimes impact a Toastmasters club.

Currently, David lives in Boise, Idaho, working as an account executive with Ooma and the IT director for Solitco, a solar panel manufacturing start-up based in Goodyear, Arizona. When he can get a few hours of free time, he enjoys golf, camping, and fly-fishing.

Sandra Savage



Sandra first joined Toastmasters in 1988, and has served as a club president, vice president of marketing, vice president of membership, and treasurer.

She is currently a member of "The Capitol Club Toastmasters," "Treasure Valley Advanced Club" and a 17-country International club, "Toastmasters United." When Pathways premiered at the beginning of 2017, she was one of the world's first Pathways Ambassadors and Guides.

Throughout three careers (high tech, culinary, and now as a writer), Sandra has found it a constant asset to speak comfortably and professionally wherever she goes.

Breakout Session Speakers

Mira Johnson



Mira is a passionate speaker who delivers high-energy presentations that connect with her audience, encourage participation, and welcome discussions. Audiences value her expertise in financial automation and employee motivation.

Mira holds a Masters' Degree in Financial Management and Accounting and is a CPA. She is the managing partner of The JF Bell Group, CPAs serving small veterinary practices across the United States. Her articles on financial automation and employee motivation have been published in veterinary publications.

Mira has been in Toastmasters for four years. She loves Toastmasters and the changes it continues to make in her life.

Jimmy Bell



Jimmy, an up-and-coming presenter, a CPA, and practice advisor, with over 40 years of experience. Passion inspired him to start his own veterinary-focused CPA firm and become co-owner of a veterinary clinic.

Besides being a Toastmaster for four years, Jimmy is active in many veterinary organizations and vice-chair of the Idaho State Board of Accountancy. Recharging comes from playing outdoors, traveling, and loving on Ms. Bella, the company Chief Dog Officer.

Jimmy's gift for seeing the potential and acting on it will help you maximize the influence Toastmasters' can have on your life by strengthening your personal and business relationships. Be inspired!

Breakout Session Speakers

Dave Morrison



Dave Morrison has been a toastmaster for nearly 5 years and is the Area B3 Director, VPE of SEA Toastmasters, and President of Smile Toastmasters Club.

He has been an audio professional for over 30 years and operates a recording studio. He is also the leader of the band "The Mighty Rock Farmers" whose Toastmasters' members wrote a song based on the answer to the Table Topics question "You are a flower. What kind are you?" (The answer is, "I Am a Pansy").

When Pathways first came to our region, he created video content for the Level 4 project "Create a Podcast". He has been tinkering with video and livestreaming since then which became very useful during the pandemic. He has given 10 unique speeches on microphones and many speeches on video, especially the amazing, free Television Studio in-a-box software, OBS Studio.

Terry Yackley



Terry Yackley joined Toastmasters in 2004 and is currently VPE of Smile in Pocatello and Treasurer of Surpassing Excellence Academy – SEA. She was a starting sponsor for Strong Women's Legacy at the Pocatello Women's Correctional Center. She's held every club office and has been Area Director and Division Director.

Terry earned a Master of Education in Instructional Technology, and currently works as a Project Manager in the Shoshone-Bannock Tribal Court on the Fort Hall Reservation, working with clients returning to the community after incarceration. She loves education, science, and art. Her main media are wood burning and sculpture.

Breakout Session Speakers

Bonny Armstrong



Bonny is a club officer of Park City Toastmasters and the D5 Area Director. In her club, Bonny finds the role of Vice President Education to be a rewarding and challenging position; she enjoys introducing new Toastmasters to the Pathways educational program, helping seasoned members discover its benefits, and training other club officers at District 15 events.

Bonny joined Toastmasters for her own self-improvement but finds building relationships and collaborating with other Toastmasters to be her favorite benefit of membership. When she is not writing and delivering speeches, she is an avid cave explorer and disc golfer.

Ken Jenkins



Ken is a twenty-five-year Toastmaster, and he is currently a member of Pioneer Toastmasters Club in Boise. He earned his first Distinguished Toastmaster (DTM) award in 2004 and his second DTM in 2014.

During his career, Ken has coached, mentored and supported fellow Toastmasters of every generation, from Silents to Generation Z. Additionally, he has held numerous club offices and twice served as an Area Governor (now Director). Ken is currently immersed in his second Path, Presentation Mastery, and recently completed the Effective Coaching Path.

Beyond Toastmasters, Ken serves as the Training Manager for the Ada County Juvenile Court Services in Boise. He is responsible for providing training and guidance to 150 juvenile justice employees from four generations.

Over his thirty-eight-year adult education career, Ken has taught courses in areas such as coaching, mentoring, generational team building, meeting management, and instructor development. His wife Kari is a member of Boise Club 61.

Evaluation Judging Criteria

Evaluation Ballot

JUDGING ITEMS	SUGGESTED POINT VALUES			
	E X C E L L E N T	V E R Y G O O D	G O O D	F A I R
Analytical Quality Clear, Focused	40	28-39	17-27	0-16
Recommendations Positive, Specific, Helpful	30	22-29	13-21	0-12
Technique Sympathetic, Sensitive, Motivational	15	11-14	6-10	0-5
Summation Concise, Encouraging	15	11-14	6-10	0-5
TOTAL SCORE (100 Points Possible)				

Analytical Quality refers to the effectiveness of the evaluation. Every evaluation should carefully analyze the strengths and weaknesses of the speaker's presentation. Were the evaluator's comments clear and logical? Did the evaluator identify specific strengths and weaknesses of the presentation?

Recommendations are an important part of an evaluation. An evaluator not only points out the strengths and weaknesses of a speech, he/she also offers specific recommendations for improvement. Recommendations should be practical, helpful and positive, and they should enable the speaker to improve his or her next presentation.

Technique refers to the way the evaluator presents his/her comments and recommendations. An evaluator should be sensitive to the feelings and needs of the speaker yet inspire and encourage the speaker in his/her future speaking efforts.

Summation is how the evaluator concludes the evaluation. The conclusion should briefly summarize the evaluator's comments and suggestions and be positive and encouraging.



International Judging Criteria

International Ballot

JUDGING ITEMS		SUGGESTED POINT VALUES			
		E X C E L L E N T	V E R Y G O O D	G O O D	F A I R
Speech Development Structure, Organization, Support Material	C O N T E N T	20	14-19	9-13	0-8
Effectiveness Achievement of Purpose, Interest, Reception		15	11-14	6-10	0-5
Speech Value Ideas, Logic, Original Thought		5 0	15	11-14	6-10
Physical Appearance, Body Language, Speaking Area	D E L I V E R Y	10	7-9	4-6	0-3
Voice Flexibility, Volume		10	7-9	4-6	0-3
Manner Directness, Assurance, Enthusiasm		3 0	10	7-9	4-6
Appropriateness To Speech Purpose And Audience	L A N G U A G E	10	7-9	4-6	0-3
Correctness Grammar, Pronunciation, Word Selection		2 0	10	7-9	4-6
TOTAL SCORE (100 Points Possible)					

Content (50%)

Speech Development is the way the speaker puts ideas together so the audience can understand them. The speech is structured around a purpose, and this structure must include an opening, body and conclusion. A good speech immediately engages the audience's attention and then moves forward toward a significant conclusion. This development of the speech structure is supported by relevant examples and illustrations, facts and figures, delivered with such smoothness that they blend into the framework of the speech to present the audience with a unified whole.

Effectiveness is measured in part by the audience's reception of the speech, but a large part is your subjective judgement of how the speech came across. You should ask yourself such questions as "Was I able to determine the speaker's purpose?" "Did the speech relate directly to that purpose?" "Was the audience's interest held by the speaker?" "Was this speech subject appropriate for this particular audience?"

Speech Value justifies the act of speaking. The speaker has a responsibility to say something meaningful and original to the audience. The listeners should feel the speaker has contributed to their thinking. The ideas should be important ones, although this does not preclude a humorous presentation of them.

International Judging Criteria

International Ballot

JUDGING ITEMS		SUGGESTED POINT VALUES			
		E X C E L L E N T	V E R Y G O O D	G O O D	F A I R
Speech Development Structure, Organization, Support Material	C O N T E N T	20	14-19	9-13	0-8
Effectiveness Achievement of Purpose, Interest, Reception		15	11-14	6-10	0-5
Speech Value Ideas, Logic, Original Thought		5 0	15	11-14	6-10
Physical Appearance, Body Language, Speaking Area	D E L I V E R Y	10	7-9	4-6	0-3
Voice Flexibility, Volume		10	7-9	4-6	0-3
Manner Directness, Assurance, Enthusiasm		3 0	10	7-9	4-6
Appropriateness To Speech Purpose And Audience	L A N G U A G E	10	7-9	4-6	0-3
Correctness Grammar, Pronunciation, Word Selection		2 0	10	7-9	4-6
TOTAL SCORE (100 Points Possible)					

Delivery (30%)

Physical presentation of a speech carries part of the responsibility for effective communication. The speaker's appearance should reinforce the speech, whether profound, sad, humorous or instructional. Body language should support points through gestures, expressions and body positioning. The speaker makes effective use of and stays within the designated speaking area.

Voice is the sound that carries the message. It should be flexible, moving from one pitch level to another for emphasis, and should have a variety of rate and volume. A good voice can be clearly heard, and the words easily understood.

Manner is the indirect revelation of the speaker's real self as the speech is delivered. The speaker should speak with enthusiasm and assurance, showing interest in the audience and confidence in their reactions.

Language (20%)

Appropriateness of language refers to the choice of words that relate to the speech purpose and to the audience hearing the speech. Language should promote clear understanding of thoughts and should fit the occasion precisely.

Correctness of language ensures that attention will be directed toward what the speaker says, not how it is said. Proper use of grammar and correct pronunciation will show that the speaker is the master of the words being used.

Announcements

- District Executive Committee training for Incoming District Officers
June 26, 2021
- Toastmasters Leadership Institute and Club Officer training
July 17, 2021
- Toastmasters International Convention (virtual)
August 23-28th
- District Executive Committee Annual Meeting
September 17th
- Fall Awards Event – Hosted by Division C
- District Annual Conference – Hosted by Division E



Thank you!!

This conference would not have been possible without the help of volunteers from throughout the district. We would like to extend a huge THANK YOU!!!

International Contest Chair - Vy Nguyen

Evaluations Contest Chair - Melanie Palmer

Conference Toastmaster - Lumuli Wanyonyi

Conference Site webmaster - Chris Frye

Conference Image Design - DJ Calderwood

Registrations Chair – Marisa Whittington

Zoom masters, room helpers, test speaker, keynote speakers, presenters, contest volunteers, and finally to all our participants!

